



Derek

DESIGN
STUDIO MARELLI
2019

marelli



DEREK sofa
9DK202 cm 188x70x77h
 Fabric: cat. C art. Pantera col. 25
 Base: OPR15 moka matt stained oak

1 x **9CU106 cm 45x45**
 Leather: cat. Lusso art. Brevia col. P-4202 Bruno

DEREK armchairs
9DK101 cm 75x70x77h
 Leather: cat. Lusso art. Seta col. Ebanò (x1)
 Fabric: cat. H art. Sahco Kent col. 003 (x2)
 Base: OPR15 moka matt stained oak

DUNE coffee tables:
7DU101 ø cm 40x42h
7DU102 ø cm 40x52h
 Base: OPR15 moka matt stained oak
 Top: OPP13 Velvet brown marble

FRAME coffee table
7FR121 ø cm 100x28h
 Base: OPM15 antique gold brushed metal
 Top: OPP13 Velvet brown marble

CLIP coffee table
7CL117 ø cm 40x40h
 OPM15 antique gold brushed metal



DEREK armchair
9DK101 cm 75x70x77h
Leather: cat. Lusso art. Seta col. Ebanò
Base: OPR15 moka matt stained oak

DUNE coffee table
7DU101 ø cm 40x42h
Base: OPR15 moka matt stained oak
Top: OPP13 Velvet brown marble



DEREK armchairs
9DK101 cm 75x70x77h
Fabric: cat.
Base: OPR15 moka matt stained oak



CHIA armchairs
9CH1105 cm 58x53x77h
 Fabric: cat. C art. Koala col. 123
 Metal base: OPM15 antique gold brushed

DEREK sofa
9DK202 cm 188x70x77h
 Fabric:
 Base: OPR15 moka matt stained oak

1 x **9CU106 cm 45x45**
 Leather: cat. Lusso art. Brevia col. P-4202 Bruno

DEREK armchairs
9DK101 cm 75x70x77h
 Fabric: cat.
 Base: OPR15 moka matt stained oak

FRAME coffee table
7FR121 ø cm 100x28h
 Base: OPM15 antique gold brushed metal
 Top: OPP3 Emperador brown

DUNE coffee tables
7DU101 ø cm 40x42h
7DU102 ø cm 40x52h
 Base: OPR15 moka matt stained oak
 Top: OPP13 Velvet brown marble

Derek

DESIGN
STUDIO MARELLI
2019

Schienale in legno multistrato di pioppo curvato imbottito con poliuretano espanso a quote differenziate con densità 30 kg/m³ e 40 kg/m³.
Seduta in legno multistrato di pioppo imbottito con poliuretano espanso a quote differenziate con densità 30 kg/m³ e 40 kg/m³, rivestito in dacron con cinghie elastiche intrecciate.
Rivestimento fisso.
Basamento disponibile in metallo o faggioio.

*Dossier en bois multiplis de peuplier courbé fini de mousse de polyuréthane de différentes densités de 30 kg/m³ et 40 kg/m³.
Structure de l'assise en bois multiplis de peuplier finie de mousse de polyuréthane de différentes densités de 30 kg/m³ et 40 kg/m³ couverte de dacron, muni de bandes élastiques entrecroisées.
Revêtement fixe.
Piètement disponible en métal ou en hêtre.*

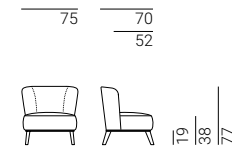
*Backrest made of curved multi-ply poplar wood, upholstered with polyurethane foam in different densities of 30 kg/m³ and 40 kg/m³.
Seat structure made of multi-ply poplar wood, upholstered with polyurethane foam in different densities of 30 kg/m³ and 40 kg/m³, covered with dacron, with interwoven elastic belts.
Fixed covers.
The base is available in metal or beech.*

*Спинка кресла: гнутая многослойная фанера из тополя, покрытая вспененным полиуретаном различной степени плотности 30 и 40 кг/м³.
Сиденье: многослойная фанера из тополя, покрытая вспененным полиуретаном различной степени плотности 30 и 40 кг/м³ в чехле из дакрона, подвеска из перекрещивающихся эластичных ремней.
Чехлы несъемные.
Основание: металл /дерево (бук)*

*Rückenlehne aus gebogenem Pappelschichtholz, gepolstert mit Polyurethan-Schaumstoff in verschiedenen Dichten von 30 Kg/m³ und 40 Kg/m³.
Sitzstruktur aus Pappelschichtholz, gepolstert mit Polyurethan-Schaumstoff in verschiedenen Dichten von 30 kg/m³ und 40 Kg/m³, mit Dacron ummantelt, mit geflochtenen Gummigurten.
Derek ist immer festbezogen.
Das Untergestell ist in Metall oder in Buchenholz verfügbar.*

Derek

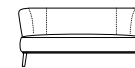
DESIGN
STUDIO MARELLI
2019



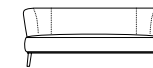
Divani Sofas



9DK101
Poltrona
Armchair
L75 P70 H77



9DK201
Divano
Sofa
L168 P70 H77



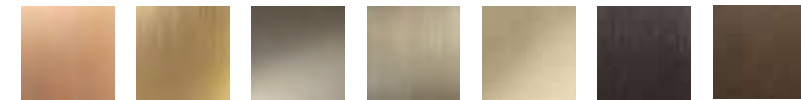
9DK202
Divano
Sofa
L188 P70 H77

Finiture Finishes

Base in metallo Metal base



Code
Shiny chrome metal **OPM1**
Brushed matt chrome metal **OPM2**
Brushed matt dark grey metal **OPM3**
RAL 9017 black painted metal **OPM6**
RAL 9016 white painted metal **OPM7**
Classic bronze painted metal **OPM9**
Golden beach painted metal **OPM10**
Gold pearl painted metal **OPM11**



Code
Brushed copper metal **OPM12**
Brushed antique brass metal **OPM13**
Shiny black chrome metal **OPM14**
Brushed antique gold metal **OPM15**
Shiny brass chrome metal **OPM16**
Bronze metal **OPM17**
Anodyc Bronze painted metal **OPM18**

Base in legno Wooden base



Code
Cherry stained oak **OPR1**
Wengé stained oak **OPR2**
Walnut stained oak **OPR3**
Natural oak **OPR4**
Black stained oak **OPR5**
Cherry Milano stained oak **OPR6**



Code
Tobacco stained oak **OPR8**
Grey taupe stained oak **OPR9**
Whitened oak **OPR10**
Charcoal stained oak **OPR11**
Mahogany stained oak **OPR12**
Moka matt stained oak **OPR15**